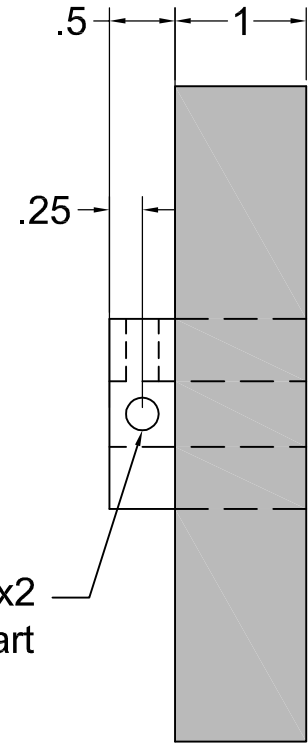
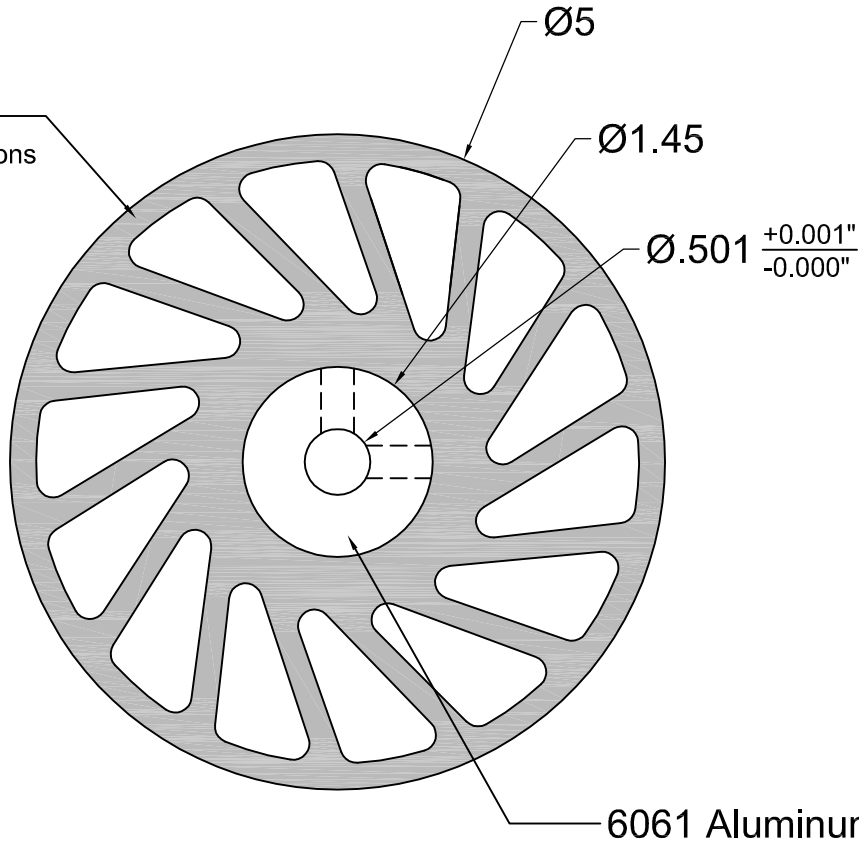


| REVISIONS |             |      |          |
|-----------|-------------|------|----------|
| LTR       | DESCRIPTION | DATE | APPROVED |
|           |             |      |          |

ML6 Polyurethane  
See chart for durometer options



1/4-20 x2  
90° Apart

6061 Aluminum Core

| <b>Durometer Options</b>   |                         |
|--|-------------------------|
| Replace <b>XXX</b> in Part Number with 3 letter durometer code from options below. |                         |
| <b>40A</b> = 40 SHORE A  | <b>80A</b> = 80 SHORE A |
| <b>55A</b> = 55 SHORE A  | <b>90A</b> = 90 SHORE A |
| <b>70A</b> = 70 SHORE A  |                         |



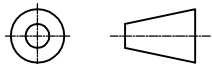
**MERIDIAN  
LABORATORY**

2415 Pleasant View Rd. Middleton, WI 53562  
(608) 836-7571 MeridianLab.com

UNLESS OTHERWISE SPECIFIED,  
DIMENSIONS ARE IN INCHES AND  
TOLERANCES ARE:

| FRACTIONS | DECIMALS    | ANGLES |
|-----------|-------------|--------|
| ±1/16     | .X ± .1     | ±1/2°  |
|           | .XX ± .01   |        |
|           | .XXX ± .005 |        |

PROJECTION



APPROVALS

DATE

TITLE

5.0" x 1.0" ML6 NO-CRUSH WHEEL

DRAWN

AG

2/8/23

PART NO.

NCW-450-XXX

CHECKED

VRN

2/23/23

MATERIAL

6061 AL & ML6 PU OVERMOLD

APPROVED

SCALE 3:2

REV. -

SHEET 1 of 1

ML6 CUST. BLOCK

This drawing is proprietary to Meridian Laboratory Inc. and may not be copied, disclosed, or distributed without explicit written permission. Design subject to change without notice.